

Hamilton County Office Of Reentry

Trina Jackson, Director

Who is HCOR

Established in 2011 TO DISRUPT THE CYCLE OF REINCARCERATION IN
HAMILTON COUNTY

Our mission: To promote collaborative services for all returning citizens by identifying common barriers, advocating for community resources, and offering a network of support.

The Team:

- Three reentry coordinators
- One reentry transition specialist
 - Administrative Assistant
 - Director

The Office is supported by the Hamilton County Commissioners and the Family Treatment and Services Levy.

Number of people released from state prisons	Approximately 17,000
Number of people returning to Hamilton Co.	700

Hamilton County was the 2 nd largest contributor to the prison population in 2022
Office of Reentry provides coordination of care for approximately 1400 people in 2022

Who We Serve

Client demographics:

- Average age: 31-45
- Predominately African-American males
- Approximately 45% of clients on community control
- Approximately 77% have a felony
- Most frequent needs: Housing & Employment

Our Approach

- **Direct client engagement**
 - Daily client support and reentry planning
- **Programming – to identify strategies to reduce recidivism**
 - Reentry Pod (Pre-Covid)
 - Preparing Incarcerated Women for Sustainable Careers
 - Probation Call-ins
- **Judicial engagement**
 - Welcome Home Reentry Docket
 - Social Work Program
- **Advocacy**
 - Housing
 - Access to resources – One Stop Resource Center

Programming - Reentry Pod

- Pre-release planning to connect inmates at the Hamilton County Justice Center to community resources prior to release. The Reentry Pod housed sixteen male mid to high level offenders.
- 2020 NACo Award Winner for Innovation
- <https://www.youtube.com/watch?v=4-03gSSFt9A>
- 157 Participants 2017-2020
- 11% Recidivism – Twelve months from release



Programming- Women in Reentry

All programs employ evidence-based practices that have been shown to reduce recidivism.



Preparing Incarcerated Women for Sustainable Careers

- Private-public partnership
- 5-cohorts between 2018-2023
- Sponsorship for sober living, residential treatment and other programming

Programming - Probation Call-ins

- Pilot project with Hamilton County Probation Department
- Discussions held in the community
- 33 participants - 2 new offenses

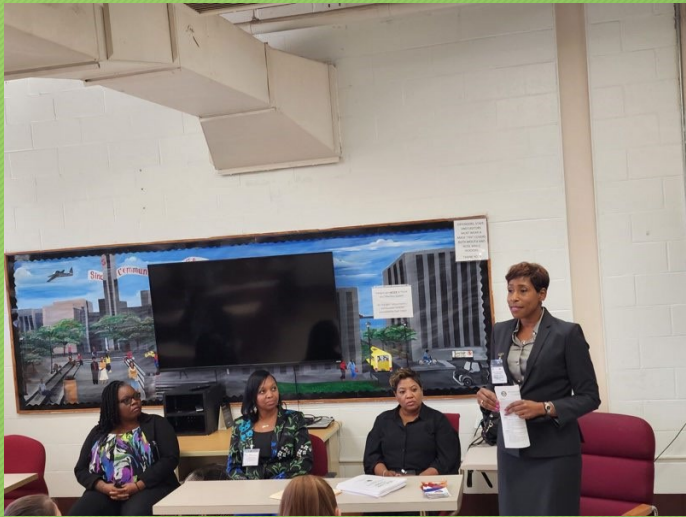
Judicial Engagement

Welcome Home Reentry Docket
Common pleas Court Judge
Wende Cross

Established 2022

Social Work Program
Municipal Court Judge
Andre Johnson

Established 2022



Prison Visits



Advocacy – Access to Resources

One Stop Resource Center

- Created to eliminate barriers to accessing supportive services that improve quality of life and provide essential support to families.
- The goal is to offer our community access to service providers each month at the same location for assistance related to vital records, personal identification, substance abuse and mental health care, child support concerns, housing, employment, record sealing or expungement, and health care.



Challenges

1.

Housing Affordability in Hamilton County

An analysis of households, housing affordability, and housing subsidy in Hamilton County and Cincinnati, Ohio

February, 2017

LISC
Greater Cincinnati &
Northern Kentucky

Community Building Institute

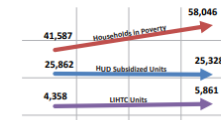
A PARTNERSHIP BETWEEN

XAVIER UNIVERSITY
United Way

Executive Summary

A Growing Housing Need

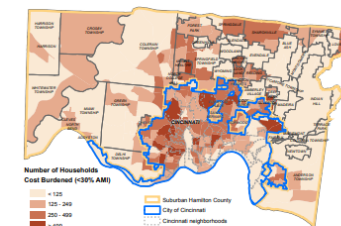
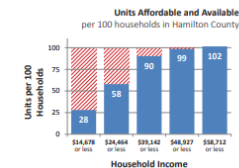
The number of Hamilton County households in poverty has grown by 40% since 2000. Over the same period, the number of HUD-subsidized units has decreased slightly. There are also more Low Income Housing Tax Credit (LIHTC) units in the County than in 2000, but many times these units overlap with HUD-subsidized units. Overall, the availability and affordability of housing has not kept pace with the rise in poverty.



Change in Number of Units, 2000-2014
Hamilton County

The Affordable and Available Housing Gap

For every 100 of the lowest income households in Hamilton County, there are only 28 units of housing that are both affordable and available. This equates to an approximate gap of 40,000 units for those households making \$14,678 or less (30% of Hamilton County's median income).



Cost Burden and Severe Cost Burden, by Census Tract

Extremely Low Income Households in Hamilton County

February, 2017

Housing Affordability in Hamilton County

Executive Summary

3

2.

Employment

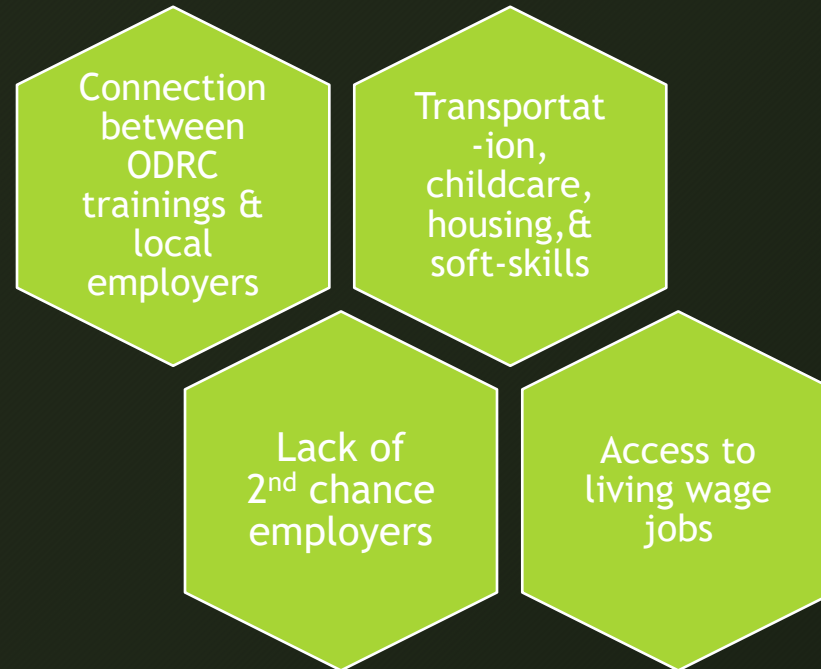
Advocacy - Housing

'This investment will have a profound impact': \$31.8 million available for affordable housing in Hamilton Co.

Hamilton County Commissioners and the Cincinnati Development Fund (CDF) are using money from the American Rescue Plan

While funding applications are open to all developers, a portion of the money will be specifically targeted towards seniors, disabled residents and returning citizens or people who were previously incarcerated, the county said.

Employment Challenges



THE REENTRY POPULATION

- 1 in 6 Ohioans or over 16% of our available workforce has a criminal background.
- According to the Ohio Justice and Policy Center, economic research suggests that Ohio is losing \$2 billion GDP annually because otherwise qualified workers are excluded by over-restrictive criminal-record-based barriers.”
- Formerly incarcerated people earn far less than the general population (Prison Policy Initiative).
- In regard to the labor shortage, the most impacted industries include (US. Chamber of Commerce):
 - Health services
 - Professional & Business Services
 - Trade
 - Accommodation & Food Services

HAMILTON COUNTY OFFICE OF REENTRY

138 E. Court Street
Cincinnati, OH 45202
513-946-4304